

West Park Post



READING FOR PLEASURE – AND SUCCESS IN ALL AREAS OF LEARNING!

At school, we have a huge focus on the importance of reading for pure enjoyment. Children across school have daily sessions where they listen to a story. This is as well as reading lessons. It really is essential we all play our part. Reading helps children make meaning of the world they live in, as well as being essential for all learning and future jobs.

What can parents do?

- Encourage reading in the home
- Make sure children have limited time on devices and games
- Ask children what they are reading
- Make sure they have time to do it!

Amazing work in school

Podcast

Children in 5SA have had an exciting opportunity to read two pre-published books and interview the authors. Keep an eye out for our online podcast, which will be live online very soon!

Year 5 classes have also been reading Journey to J-burg. Look at the Tweets:

West Park Primary @WestParkPri · May 19

Inspired by Journey to Jo'burg, 5SA @westparkpri have written their version of Grace's Story detailing the Soweto Riots in 1976. @Naidoo_J2J

Beverley Naidoo @Naidoo_J2J

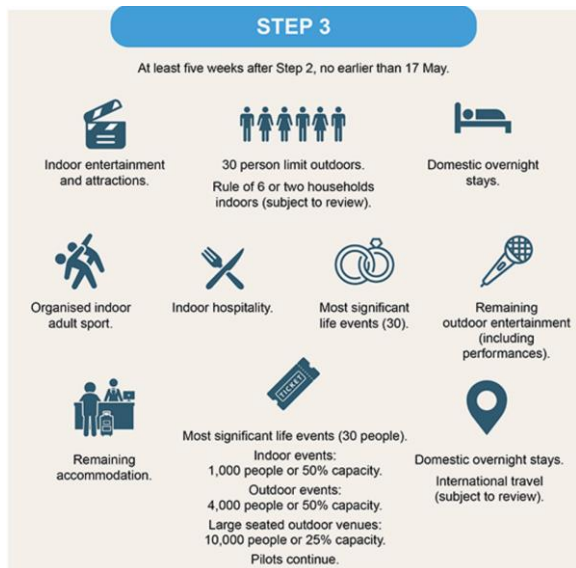
A few of many lively Y5 @WestParkPri responses to Journey to Jo'burg plus news reports of Soweto uprising. Thank you! This June 16th (SA's Youth Day) will be 45th anni. So much more to do to enable young dreams expressed here: "We are all unique... A United World" @7Stories

COVID 19 - PLEASE CONTINUE TO KEEP EVERYONE SAFE

A vital thing that EVERYONE can do is get a **vaccine** when they are offered. This will support safety for the whole community. For more useful facts and to dispel myths about vaccinations look here: [Covid-19 Vaccine | City Of Wolverhampton Council](https://www.wolverhampton.gov.uk/coronavirus-advice-and-information/covid-alert)

Government Covid roadmap

<https://www.wolverhampton.gov.uk/coronavirus-advice-and-information/covid-alert>



School needs to continue to contact trace after we close for half term. If a pupil or anyone in the house tests positive for Covid, please email school and tell us. We need to know who it is, when the symptoms started and when a test was taken. Please notify school of any test outcomes.

office@westparkprimaryschool.co.uk

Safeguarding concerns?

Remember that safeguarding is everyone's responsibility – for adults as well as children. If you are concerned about any families or neighbours over the Easter holiday, then call the police on 101 or social care on 01902 555392.

There is a lot of useful information on the following links:

www.wolverhamptionsafeguarding.org.uk

<https://www.westparkprimaryschool.co.uk/safeguarding>



**WOLVERHAMPTON
SAFEGUARDING
TOGETHER**

COVID

Concerns are rising with the new variants of the disease in circulation. Because of this, the LA and Public Health are asking for additional caution and testing.

Advice for Families about Enhanced Testing Requirements

Which test?	Household Implications	What next?
Feeling fine and well Make testing part of your routine and take a Lateral Flow Test (LFT) twice a week	None - unless LFT result is positive	Positive – Case and household isolate for 10 days and case gets a confirmatory PCR test within 24 hours Negative – carry on as normal
*Reporting your child's sickness absence? Social contact must be limited, and the child should stay at home apart from going to get a free PCR (polymerase chain reaction) test	None - unless PCR test result is positive	Positive – Case and household isolate for 10 days. All household gets a PCR test within 24 hours Negative – return to setting when feeling well
**Got Covid-19 symptoms? You must self-isolate and get a free PCR (polymerase chain reaction) test	Yes Household required to isolate for 10 days or until a negative PCR test result	Positive – Case and household isolate for 10 days from first day of symptoms. All household gets a PCR test within 24 hours Negative – isolation ends
*If no test taken, return to setting only after 48 hours of feeling well		
** If no test taken, case and household complete a full 10 day isolation period		

Links to the following sites are here: -

Ordering LFT <https://www.gov.uk/order-coronavirus-rapid-lateral-flow-tests>

Recording LFT results <https://www.gov.uk/report-covid19-result>

Booking a PCR Test <https://www.gov.uk/get-coronavirus-testadd>

How can you help further?

Families can now obtain lateral flow testing kits for use at home from school office on Tuesdays, Wednesdays and Thursdays. Testing adults without symptoms is crucial in reducing spread as it means that the chain of transmission can be broken. Also available at:

[Schools, nurseries and colleges testing: order coronavirus \(COVID-19\) rapid lateral flow home test kits - GOV.UK \(www.gov.uk\)](#)

Governing Body parent vacancies

There are currently vacancies on the Governing Body for parents or carers of children currently at West Park Primary. If you have an interest in education, or particular skills e.g. finance, then please email

westparkprimaryschool@wolverhampton.gov.uk

Dates

Friday 28th May – school closes at 3pm for half term

Monday 7th June - school reopens after half term

Friday 16th July – school closes to children at 3pm for the summer holidays

Monday 6th September – school reopens to children

Please look at the school website for other dates.

[Calendar | West Park Primary \(westparkprimaryschool.co.uk\)](https://www.westparkprimaryschool.co.uk)

The City of Wolverhampton website also has the term dates for the next three years.

[School term dates | City Of Wolverhampton Council](https://www.wolverhampton.gov.uk)

#Relightmusic 17th to 21st May 2021

The Music Service performance week is always eagerly anticipated. This is when Music Service staff go into schools to do live concerts. This gives pupils the experience of seeing music performed live, and the opportunity to see a wider range of instruments being showcased in the city.

At West Park Primary School, the year three class were able to experience live music and learn about a wide variety of instruments and music genres.

One of the children commented, "I'm inspired, I want to play the violin."



LOCKERS!

To solve our storage problems, the much-anticipated lockers will be fitted across the main school building in the summer holidays.

In the meantime, please help us by only sending reading packs, PE kits, water bottles and a packed lunch (if needed).

SCHOOL COUNCIL

Member of the School Council met the local MP Stuart Anderson on 28th May 2021 and asked him lots of questions.

Who knows...there may be a future prime minister from West Park Primary School!

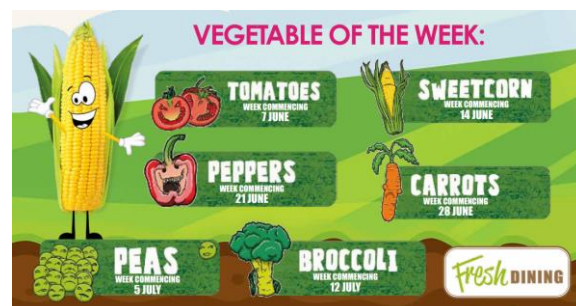


EAT THEM TO DEFEAT THEM

A shocking 80% of children in the country are not eating enough vegetables.

After half term, we are once again taking part in the national campaign which aims to to change children's attitudes towards vegetables.

Each children will be given a puzzle book and the children will be encouraged to taste different vegetables each week. If your child is packed lunchm, why not add those vegetables too!





Positive Participation Think Family Forums

Supporting families through COVID.

Come & let your voices be heard

An opportunity to share ideas and create a plan to guide the services you receive!



3 separate meeting forums:

- **Parents (1pm - 2pm)**
- **Under 13's (4pm - 5pm)**
- **Over 13's (5pm - 6pm)**

Dates:

- **Thursday 10th June (Online Teams Event- Contact us to register interest)**
 - **Thursday 12th August (ASAN community Centre)**
 - **Thursday 14th October (ASAN community Centre)**
- Free food & drinks will be available at ASAN.**

Our school attendance is great and currently stands at 97.21% Well done and thank you to families who have supported us with this. 😊

A few reminders for everyone around attendance:

- 🚩 If your child is not in school you need to call the school office (558238) to explain why they are away. Please do this before 9am.
- 🚩 School can ask to see adequate medical evidence before they authorise absence.
- 🚩 If you need to take leave of absence for your child you must fill in a form and ask for the headteacher's approval. If permission is not granted then you will be liable to a fine from the Local Authority if you still take the leave. If you take leave without seeking permission you will also be liable to a fine. The fine is currently £60 per child per parent/carer.
- 🚩 A good piece of advice from the authority is that if your child is up and about at home then they are well enough to be at school.
- 🚩 Remember that we can give medicine at school as long as an adult brings the medicine to the office and fills in a consent form.